



FASTENER SORTING CORP.

Better⁴

Better People
Better Parts
Better Environment
Better Boring

SORTING CAPABILITIES

ROLL SORT – THIS MECHANICAL SORTING METHOD CAN REMOVE FOREIGN MATERIAL SUCH AS ROLL-OFFS, CUT-OFFS, BLAST MEDIA, DEBRIS FROM SECONDARY PROCESSING & MIXED PARTS WHICH DON'T HAVE SIMILAR HEAD DIAMETER AS THE SUBJECT PART OR THICKNESS FOR WASHERS AND NUTS.

VISION SORT – DETECT SHANK LENGTH OR MAJOR DIAMETER* (WITHIN .002"), THREADS ON BOTH ENDS OF A DOUBLE ENDED STUD, HEAD DIAMETER, OVERALL LENGTH AS WELL AS SPECIFIC LENGTH REGIONS, PARTIAL THREADS, THREAD RUN-UPS (DRUNKEN THREADS) SLIDERS, AND THREAD DAMAGE AFFECTING A MINIMUM OF 180 DEGREES OF THE PART DIAMETER. CAN ALSO SORT MIXED POINT TYPES & GROOVE DIAMETERS.

OVERHEAD VISION SORT – (SAME AS ABOVE) WITH ADDED FEATURE OF SORTING FOR CRACKED HEADS MUST BE A BURST/OPEN CRACK, EXCESS FLANGE, BALLCAPS, CONCENTRICITY ISSUES, FLOWERING & OUT OF ROUND HEADS. WIDTH ACROSS CORNERS & WIDTH ACROSS FLATS ON SQUARE AND HEX HEAD PARTS. **360 DEGREE MIRROR** SORTING ALLOWS THE ABILITY TO DETECT DIAGONAL CRACKS, HAIRLINE CRACKS & CRACKS ON CAP HEAD SCREWS.

FULL PROBES – CAN SORT RECESS DEPTH WITHIN .005", AND RECESS FLAWS DUE TO BROKEN PUNCHES USING SPECIAL ACCESSORY EQUIPMENT (PHILLIPS, TORX AND POSI). SLOTTED & HEX DRIVE PRESENCE AND DEPTH CAN BE VERIFIED WITH A "PIN" SORT.

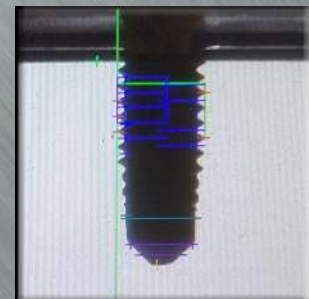
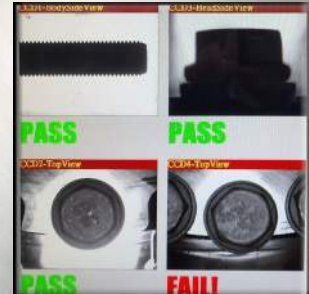
LASER SORT – WILL SORT PARTS WITH A MINIMUM LENGTH OF 5/8" FOR MULTIPLE DIAMETERS, THREAD COUNT, MULTIPLE INTERNAL LENGTHS AS WELL AS OVERALL LENGTH, BODY DIAMETER, COLLAR DIAMETER & FOREIGN MATERIAL. RECOMMENDED FOR HEADLESS PARTS OR PARTS WITH UNIQUE CONFIGURATIONS

VISION NUT/WASHER SORT (w/4, 6 or 8 CAMERAS) – SORTING NUTS FOR ID, OD, THICKNESS / HEIGHT, BURRS / CHIPS & WELD NIBS ON ROUND AND FLANGE NUTS, WIDTH ACROSS CORNERS & WIDTH ACROSS FLATS ON SQUARE AND HEX NUTS, PRESENCE OF THREADS, VERIFICATION OF NYLON RING / PATCH, & FOREIGN MATERIAL. ABILITY TO SORT WASHERS FOR ID, OD, FLATNESS, THICKNESS, SURFACE DEFECTS, CLIPPED PARTS, CUT-OFFS & FOREIGN MATERIAL. ABILITY TO SORT SOME STAMPINGS (SAMPLES MUST BE PROVIDED)

*Accuracy of diameter sorts is affected by out-of-round condition. The more perfectly round the diameter being checked, the more accurate the sort.

*Samples of actual defective parts will help in the machine setup & will be used to verify sort during the production run.

*Parts must be clean & dry for sorting



Sorting Capabilities Document Rev 02/14/2019



ISO 9001:2015



PHONE: (630) 543-3003 910 S. STILES DR. ADDISON, IL 60101 WWW.SWDINC.COM